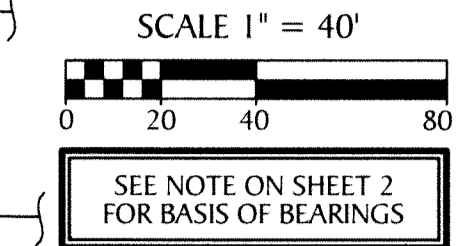
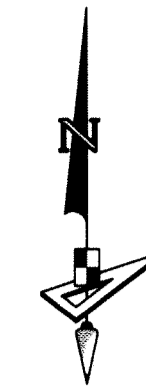
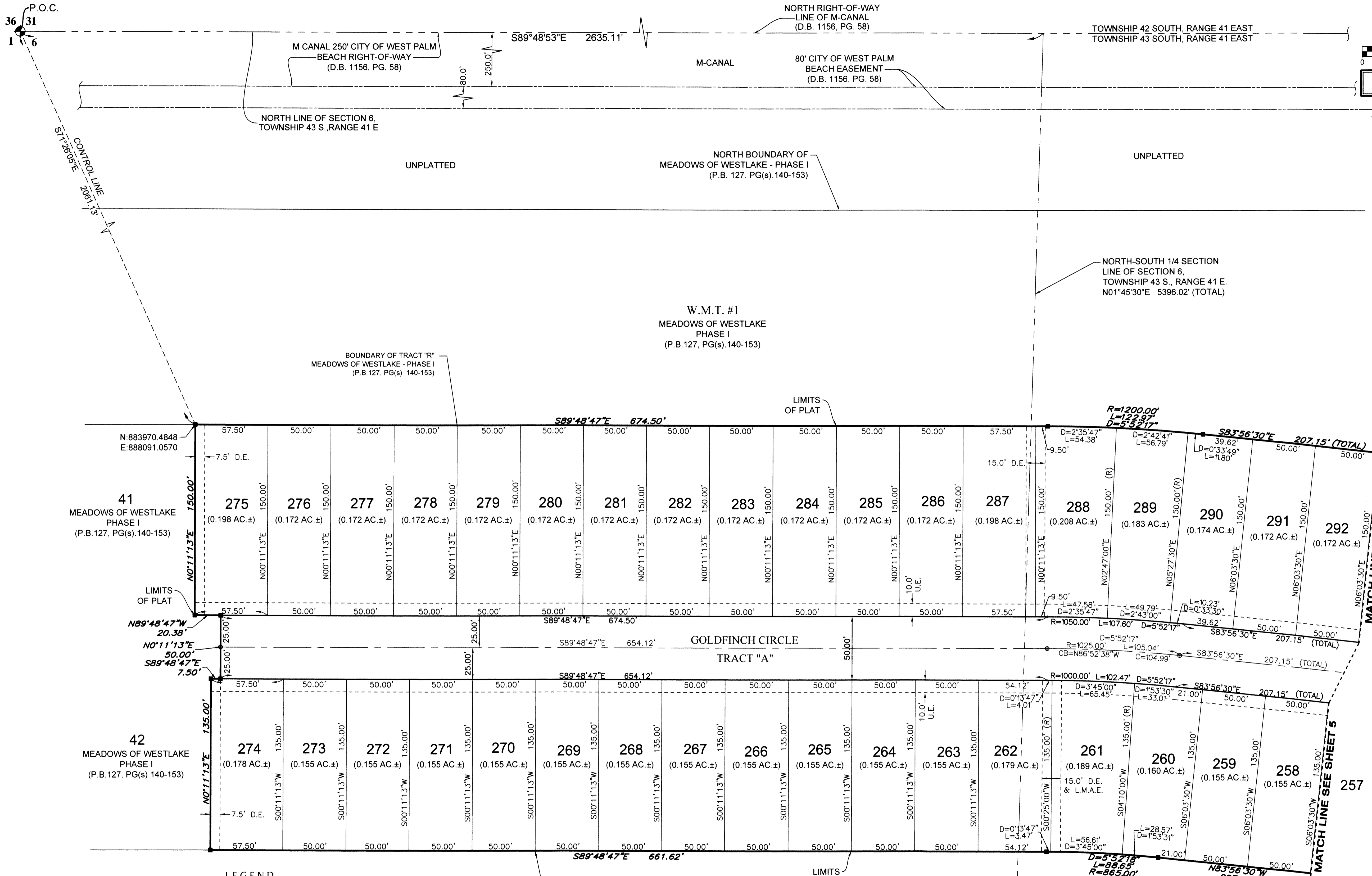
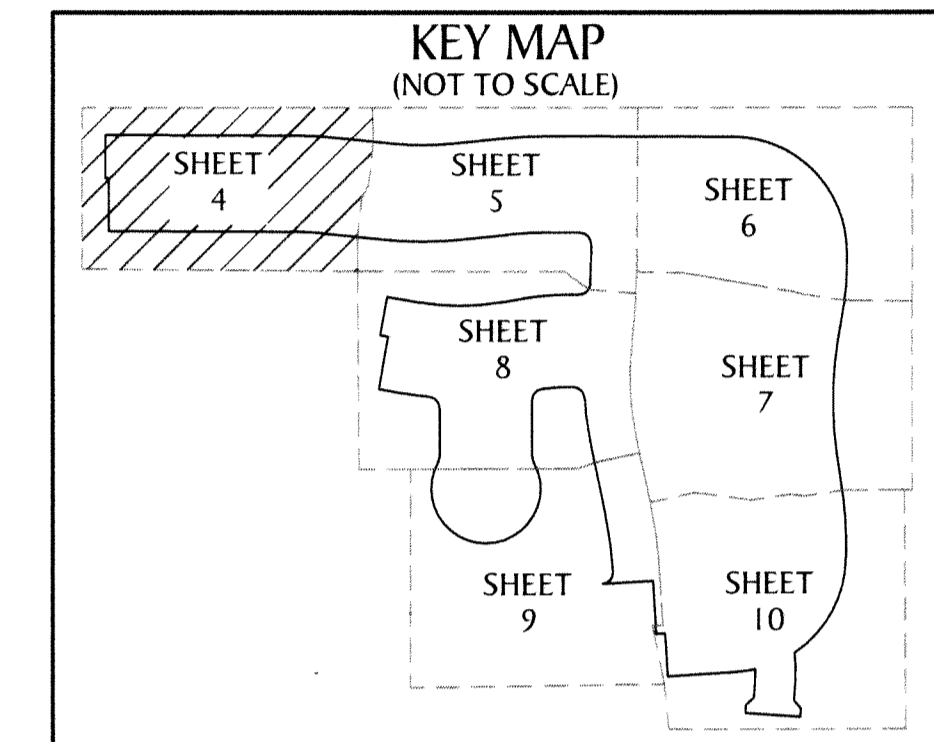


MEADOWS OF WESTLAKE - PHASE II

A SUBDIVISION IN SECTION 6, TOWNSHIP 43 SOUTH, RANGE 41 EAST,
CITY OF WESTLAKE, PALM BEACH COUNTY, FLORIDA, BEING A REPLAT
OF TRACT R AND OPEN SPACE TRACT #10 THROUGH OPEN SPACE TRACT #14 INCLUSIVE,
MEADOWS OF WESTLAKE - PHASE I, PLAT BOOK 127, PAGES 140 THROUGH 153,
PUBLIC RECORDS OF PALM BEACH COUNTY, FLORIDA



100



- LEGEND**
- | | |
|-------------------------------------------------|---------------------------------------------------------------------------------|
| P.O.B. ----- POINT OF BEGINNING | R ----- RADIUS |
| P.O.C. ----- POINT OF COMMENCEMENT | L ----- ARC LENGTH |
| P.B. ----- PLAT BOOK | D ----- DELTA ANGLE |
| D.B. ----- DEED BOOK | CB ----- CHORD BEARING |
| PG./PG(s) ----- PAGE(S) | C ----- CHORD |
| NAD ----- NORTH AMERICAN DATUM | R/W ----- RIGHT-OF-WAY |
| W.M.T. ----- WATER MANAGEMENT TRACT | (R) ----- RADIAL |
| O.S.T. ----- OPEN SPACE TRACT | (NR) ----- NON-RADIAL |
| R.T. ----- RECREATION TRACT | PRM ----- PERMANENT REFERENCE MONUMENT |
| P.B.C. ----- PALM BEACH COUNTY | ● ----- PERMANENT CONTROL POINT |
| U.E. ----- UTILITY EASEMENT | □ ----- FOUND PERMANENT REFERENCE MONUMENT |
| D.E. ----- DRAINAGE EASEMENT | ■ ----- SET 4"x4" CONCRETE MONUMENT WITH 2" ALUMINUM DISK STAMPED "PRM LB 7768" |
| L.M.A.E. ----- LAKE MAINTENANCE ACCESS EASEMENT | |
| 6-43-41 ----- SECTION-TOWNSHIP-RANGE | |